

Legend LX

The first fully automatic water maker designed for Mega Yachts

From 2,100 to 3,400 gallons per day
(7,950 - 12,870 liters per day)



The Blue Water LX series is the world's first fully automatic MegaYacht/Commercial size watermaker. It features Blue Water's proven 7" full color touchscreen controller which provides an intuitive interface with the system. The Legend LX offers one touch operation and continuous monitoring to maximize product water production and quality.

Legend LX Systems Feature:

- Fresh Water Flush system
- Quiet and reliable high pressure pump
- High Rejection membranes
- Product water Carbon filter
- Dual voltage 50/60 Hz motors
- Stainless steel booster pump shaft
- Designed for ease of service & maintenance
- Installation kit including bronze sea strainer
- No charge upgrade to Commercial Pre-filter

Legend LX System Advantages:

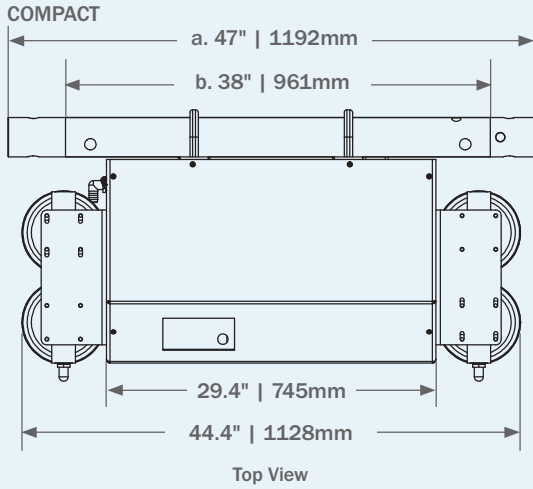
- Fully Automatic
- Industry leading 7" full color icon driven touch screen controller
- Monel transducers for longer life
- Product water pH filter
- NMEA 2000 compatibility available
- Optional 4.3" or 7" Remote Touch Screen control
- Expandable to 3,400 gallons per day
- Available in both compact frame and modular component style configurations

LEGEND LX SPECIFICATIONS

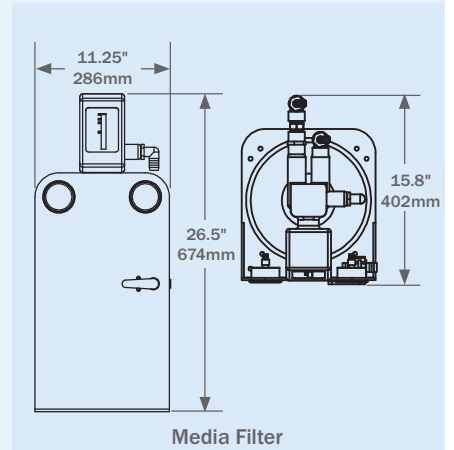
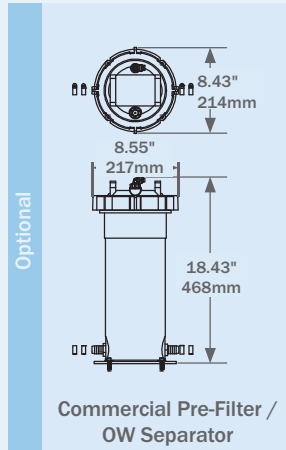
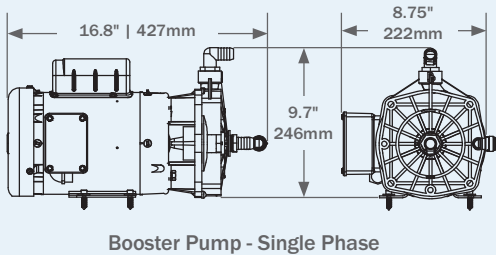
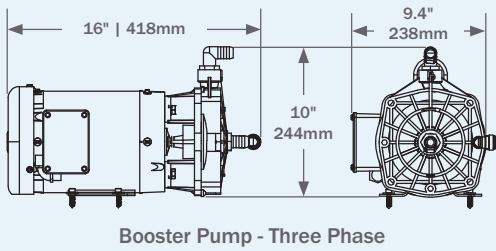
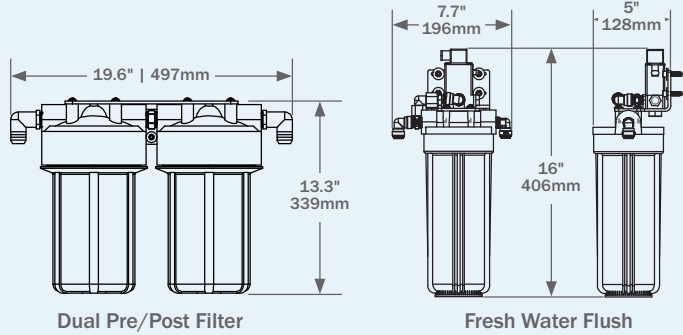
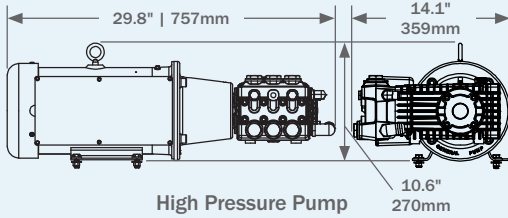
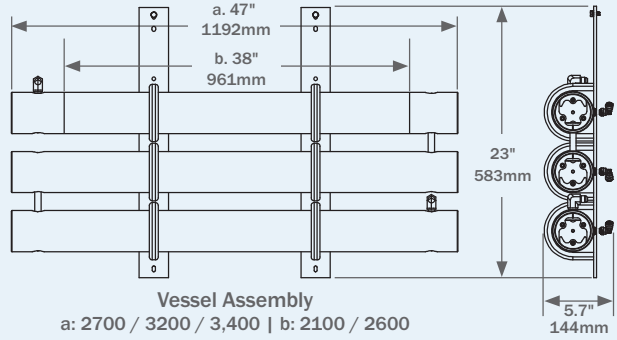
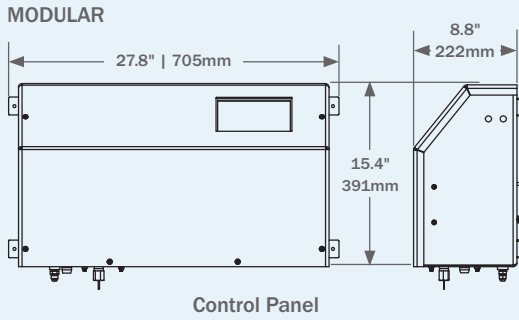
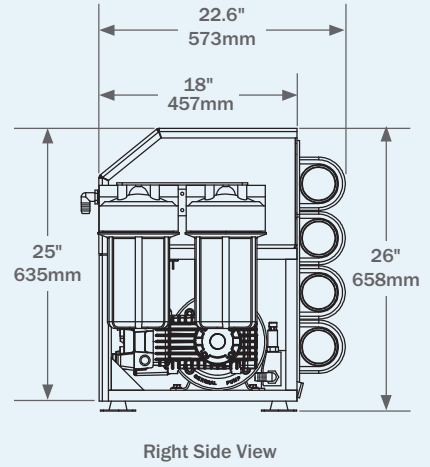
Model #	No. of Membranes	Production per hour	Production per 24 hour	Feed Flow GPM	Weight (lbs. / kg.)
LLX 2100	3	85 Gal / 331 L	2,100 Gal / 7,950 L	7.6	265 / 120
LLX 2600	4	108 Gal / 410 L	2,600 Gal / 9,840 L	7.6	275 / 125
LLX 2700	3	113 Gal / 426 L	2,700 Gal / 10,220 L	7.6	270 / 122
LLX 3200	4	133 Gal / 505 L	3,200 Gal / 12,110 L	7.6	280 / 127
LLX 3400	4	142 Gal / 536 L	3,400 Gal / 12,870 L	7.6	280 / 127

Model (phase)	Booster Pump HP KW	HP Pump HP KW	HZ	Voltage	Run Amps	Start Amps
Single	1 0.75	5 3.75	50/60	220	34	98
Three	1 0.75	5 3.75	50/60	208/230	22 / 18	48 / 40
Three	1 0.75	5 3.75	50/60	380/460	11 / 9	24 / 20

LEGEND LX DIMENSIONS



Vessel Assembly
a: 2700 / 3200 / 3,400
b: 2100 / 2600



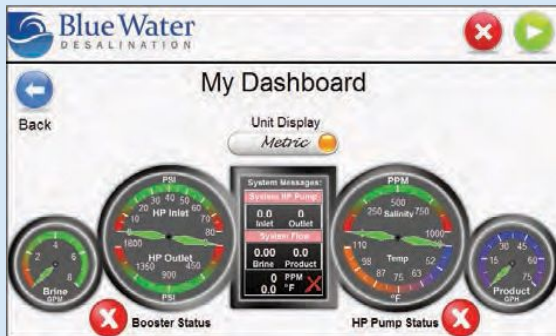
LEGEND / LEGEND IX CONTROLLER FEATURES

The Blue Water Desalination Legend series is the easiest system to operate available on the market today. It features fully automatic operation through an industry leading 7" full color touch screen control. The system's proprietary software constantly monitors and adjusts the system to compensate for changes in water temperature and salinity to ensure maximum production and product water quality.



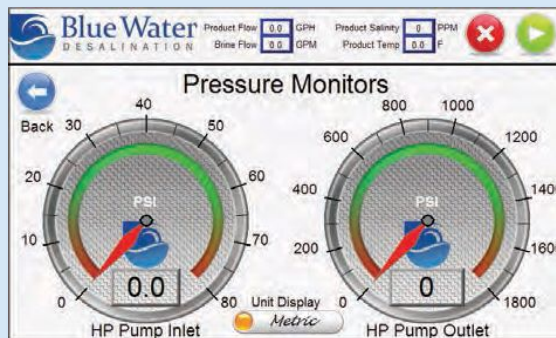
System Operation Screen

The *System Operation* screen is where the system startup can be automatically initiated with a touch of the START button. All key pressures and flows are seen on the left side of the screen. On this and every screen the output can easily be switched between Imperial and Metric measurements.



My Dashboard Screen

The *My Dashboard* screen displays a graphical representation of the key operating parameters of the system. In one quick glance you can confirm that all pressures and flows are operating in the green range of acceptable performance. The screen also displays digital confirmation of key pressure, flow and water quality readings.



Pressure Monitors Screen

The *Pressure Monitors* screen displays the High Pressure Pump inlet and outlet pressures. Similar screens are available to monitor system brine and product water flows as well as product water temperature and salinity. Additional key operating parameters are shown at the top of this and every screen.

The Legend digital controller also monitors and reports on system usage and potential problems. The *System Hours* screen displays run time and hours of operation until High Pressure Pump service is required. The *System Messages* screen gives the operator both Warnings and Faults. The Warnings give notice of potential problems while Faults give clear concise messages of the issue with the system and information to help troubleshooting.

A fully functional remote controller is available to enable you to operate and monitor your system from outside the machinery space. In addition, the optional NMEA 2000 interface enables you to operate and monitor the system through certain NMEA compatible displays.