

Legend

Fully Automatic
High Production Capability

From 475 to 1,850 gallons per day
(1,800 - 7,000 liters per day)



COMPACT



MODULAR

The Blue Water LEGEND series uses leading edge technology to provide fully automatic operation. The systems feature a 7" touch screen that provides an intuitive interface between the user and the system. Troubleshooting and maintenance are simplified by the wide array of data that is collected and accessible through the controller. The system comes complete with an automatic Fresh Water Flush system and product water pH Filter. The LEGEND series is the most sophisticated and easy to use watermaker on the market.

Legend Systems Feature:

- Fresh Water Flush system
- High Rejection membranes
- Quiet and reliable high pressure pumps
- Product water Carbon filter
- Dual voltage 50/60 Hz motors
- Stainless steel booster pump shaft
- Designed for ease of service and maintenance
- Installation kit including bronze sea strainer
- No charge upgrade to Commercial Pre-filter

Legend System Advantages:

- Fully Automatic
- Industry leading 7" full color icon driven touch screen controller
- Monel transducers for longer life
- Product water pH filter
- NMEA 2000 compatibility available
- Optional 4.3" or 7" Remote Touch Screen control
- Expandable to 1,850 gallons per day

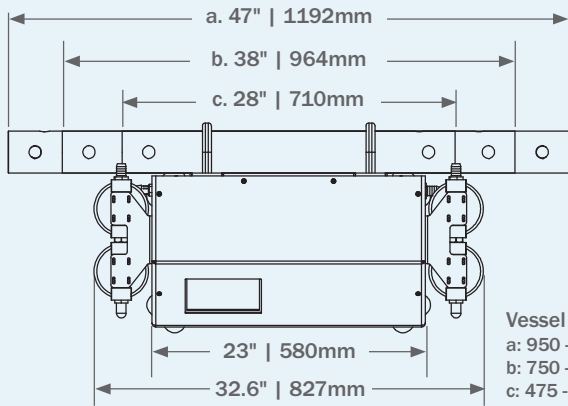
LEGEND SPECIFICATIONS

Model #	No. of Membranes	Production per hour	Production per 24 hour	Feed Flow GPM	Weight (lbs. / kg.)
LGD 475	1	20 Gal / 75 L	475 Gal / 1,800 L	4.2	165 / 75
LGD 750	1	31 Gal / 118 L	750 Gal / 2,840 L	4.2	175 / 79
LGD 950-1	1	40 Gal / 150 L	950 Gal / 3,600 L	4.2	180 / 82
LGD 950-2	2	40 Gal / 150 L	950 Gal / 3,600 L	4.2	185 / 84
LGD 1200	2	50 Gal / 189 L	1,200 Gal / 4,540 L	4.2	185 / 84
LGD 1500	2	63 Gal / 237 L	1,500 Gal / 5,680 L	4.2	185 / 84
LGD 1850	2	77 Gal / 292 L	1,850 Gal / 7,000 L	4.2	190 / 86

Model (phase)	Booster Pump HP KW	HP Pump HP KW	HZ	Voltage	Run Amps	Start Amps
Single	0.50 0.37	2.5 1.8	50/60	110/220	31.0 / 15.5	109 / 55
Three	0.50 0.37	3.0 2.2	50/60	208/230	10.6 / 8.9	37 / 36
Three	0.50 0.37	3.0 2.2	50/60	380/460	5.3 / 4.4	18 / 16

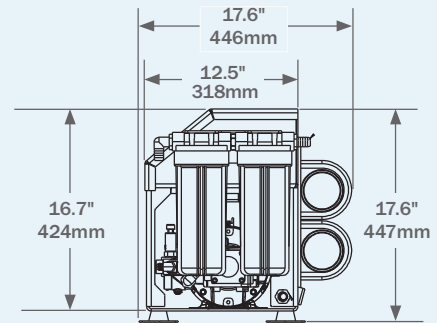
LEGEND DIMENSIONS

COMPACT



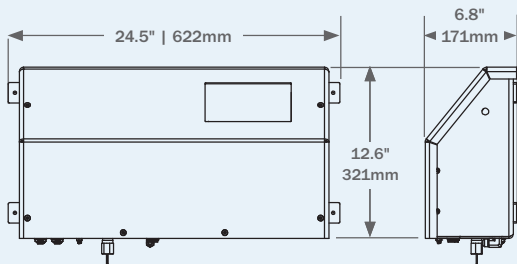
Top View

Vessel Assembly
 a: 950 - 1 / 1850 - 2 GPD
 b: 750 - 1 / 1200 - 2 / 1500 - 2 GPD
 c: 475 - 1 / 950 - 2 GPD

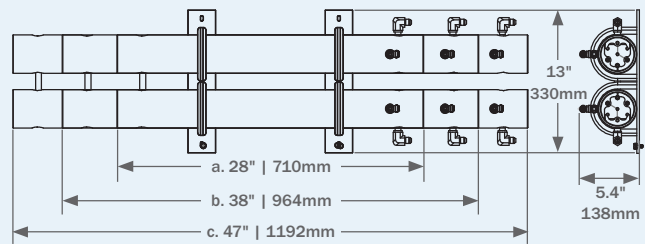


Right Side View

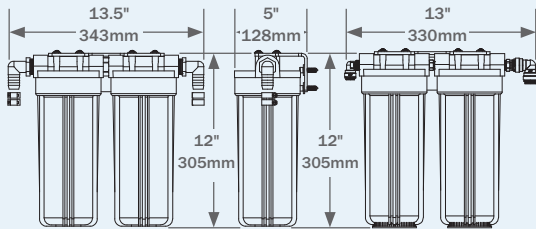
MODULAR



Control Panel

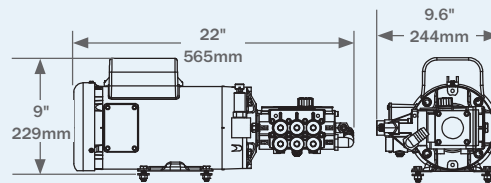


Vessel Assembly
 a: 950 - 1 / 1850 - 2 GPD
 b: 750 - 1 / 1200 - 2 / 1500 - 2 GPD
 c: 475 - 1 / 950 - 2 GPD



Dual Pre-Filter

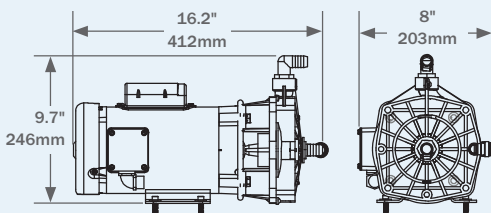
Dual Post-Filter



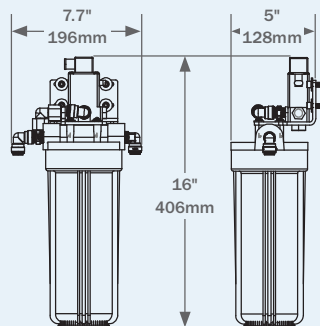
High Pressure Pump

COMPONENTS

Compact & Modular

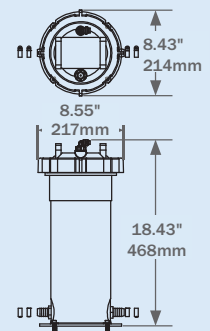


Booster Pump



Fresh Water Flush

Optional



Commercial Pre-Filter /
OW Separator

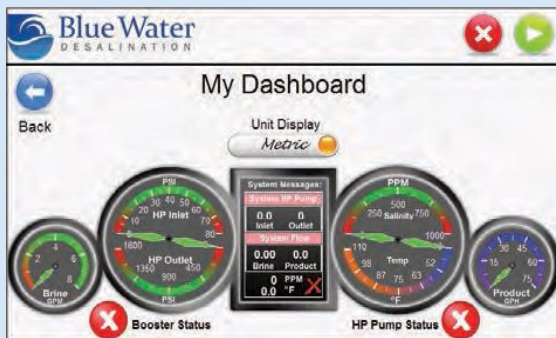
LEGEND / LEGEND IX CONTROLLER FEATURES

The Blue Water Desalination Legend series is the easiest system to operate available on the market today. It features fully automatic operation through an industry leading 7" full color touch screen control. The system's proprietary software constantly monitors and adjusts the system to compensate for changes in water temperature and salinity to ensure maximum production and product water quality.



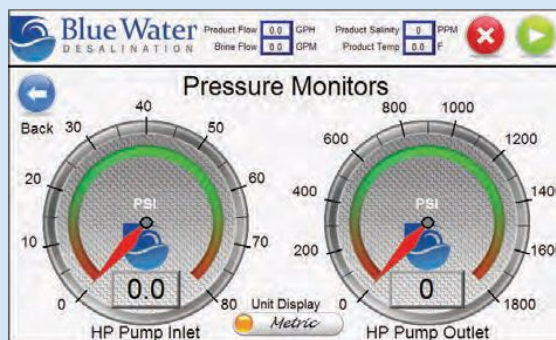
System Operation Screen

The *System Operation* screen is where the system startup can be automatically initiated with a touch of the START button. All key pressures and flows are seen on the left side of the screen. On this and every screen the output can easily be switched between Imperial and Metric measurements.



My Dashboard Screen

The *My Dashboard* screen displays a graphical representation of the key operating parameters of the system. In one quick glance you can confirm that all pressures and flows are operating in the green range of acceptable performance. The screen also displays digital confirmation of key pressure, flow and water quality readings.



Pressure Monitors Screen

The *Pressure Monitors* screen displays the High Pressure Pump inlet and outlet pressures. Similar screens are available to monitor system brine and product water flows as well as product water temperature and salinity. Additional key operating parameters are shown at the top of this and every screen.

The Legend digital controller also monitors and reports on system usage and potential problems. The *System Hours* screen displays run time and hours of operation until High Pressure Pump service is required. The *System Messages* screen gives the operator both Warnings and Faults. The Warnings give notice of potential problems while Faults give clear concise messages of the issue with the system and information to help troubleshooting.

A fully functional remote controller is available to enable you to operate and monitor your system from outside the machinery space. In addition, the optional NMEA 2000 interface enables you to operate and monitor the system through certain NMEA compatible displays.