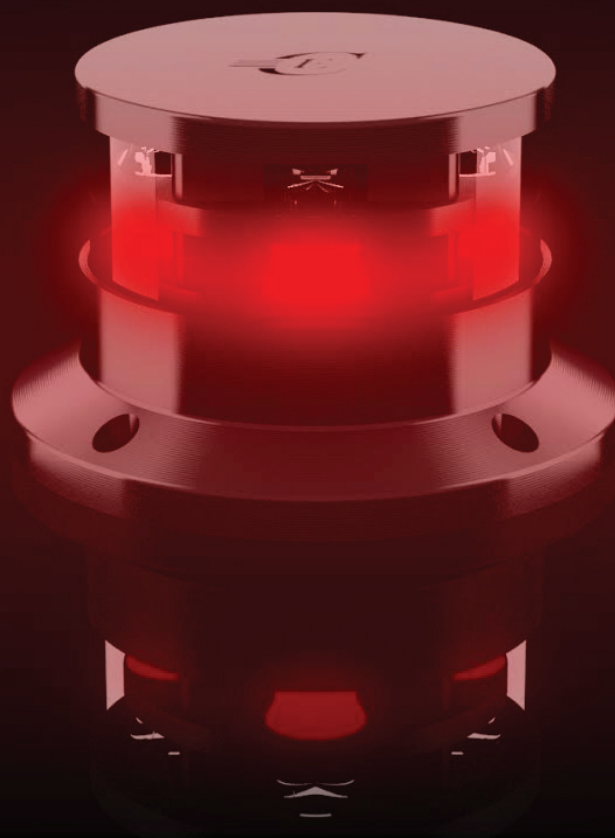




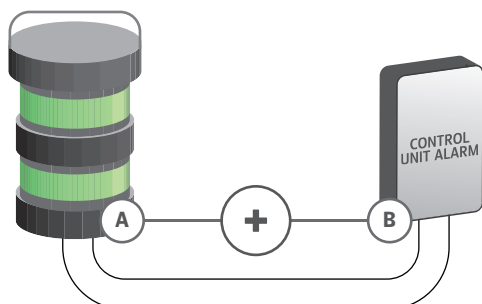
led navigation lights



Safety in First Class

ALL BUILT-IN DESIGN

TRADITIONAL LED NAVIGATION LIGHT SYSTEM



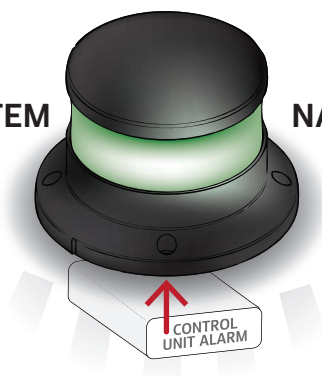
CANTALUPI LED NAVIGATION LIGHT

No additional devices for light control and alarm.



EMBEDDED SYSTEM

NAVIGATION LIGHT



All built-in design:

No additional devices
for light control and alarm

Operating Voltage:

24 V_{DC} (Range of operating voltage: 18÷32 V_{DC})

Current on LEDs:

Constant in the range of Operating Voltage

Overcurrent protection: >2A

Protection Level:

IP 68

MATERIALS AVAILABLE

Aluminum: anodized ANTICORODAL 6082

Steel: passivated and polished stainless steel
AISI 316L

Optical window:

Transparent Borosilicate Glass

Storage temperature:

-25 °C ÷ 70 °C

Operative temperature:

-25 °C ÷ 55 °C

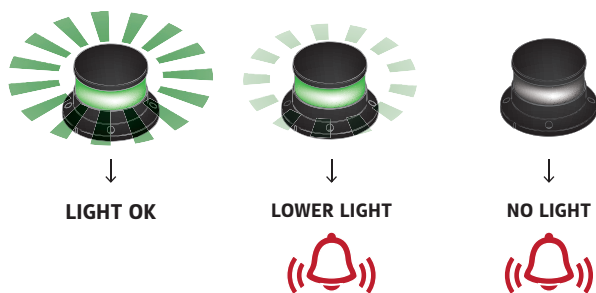
Accordance with the laws:

IMO ,COLREG-1972".

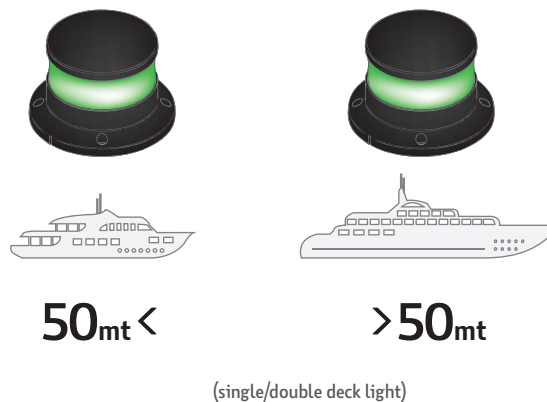
Accordance Technical prescription:

BS EN 14744 :2005, "Inland Navigation and
Sea-going Vessels - Navigation Lights"; BS EN
60945 : 2002 "General Requirements for Marine
Navigation Equipment

SECURITY NAVIGATION CONTROL SYSTEM



ALL THE SAME SIZE



FEATURES

Security Navigation Control System:
when lowering below the minimum visibility gives
an alarm

Short Circuit Detection System:
an alarm occurs in case of short circuit conditions
of the LED

End of life monitoring system:
an alarm occurs in case of navigation light is off

All the same size:
for single or double deck light (length boats > 50m)
is always the same shape and size

Redundancy of power supply and end of life:
on double lights configuration

Pre cabled:
wires have only to reach control board to collect all
functions/alarm available

Protected by Voltage inversion polarity

Protection by overvoltage

Protected by the impulses

Current on LEDs:
Constant in the range of Operating Voltage

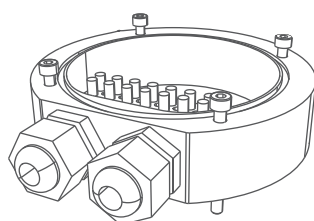
Lens protected from environmental assaults
directed to preserve visibility loss. Lens are behind
a Borosilicate Glass shield

Design:
Compact form factor and functional wiring

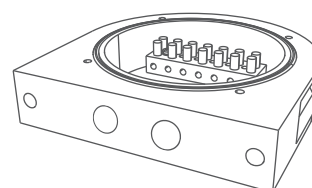
Research project from the aeronautical

LEDs Operating life is up to 50,000 hours
(for the single LED light) @Tamb. 25 °C (77 °F)

ADDITIONAL BRACKETS



Horizontal Bracket



Vertical Bracket



led navigation lights

Safety in First Class

www.cantalupi.it | info@cantalupi.it